



Low Power Consumption

High Accuracy

**ULTRA LOW POWER
LDO VOLTAGE REGULATOR**

Using Advanced CMOS Technology

DI6206 Series from Diotec is a high precision CMOS based low drop out voltage regulator. The device is compatible with low ESR ceramic capacitor. It provides output currents over 200 mA and fixed output voltages of 1.5 V to 3.6 V from an input voltage of 7.0 V. The features such as very low quiescent current and low dropout voltage, enables lower power consumption in applications and thereby delivering longer operating times for battery-powered electronics. This device's additional features include a current limit and short-circuit protection.

Features/Benefits

- › Very Low Quiescent Current: typ. 1 μ A
- › Low Dropout Voltage: typ. 250 mV
- › Maximum Output current: 200 mA
- › Output Voltage from 1.5V to 3.6 V
- › Output Voltage Accuracy: $\pm 1\%$ and $\pm 2\%$
- › Operating Temperature Range: -40°C to 85°C
- › Compatible with Low ESR Ceramic Capacitors
- › Built in Current Limiting Circuit

Applications

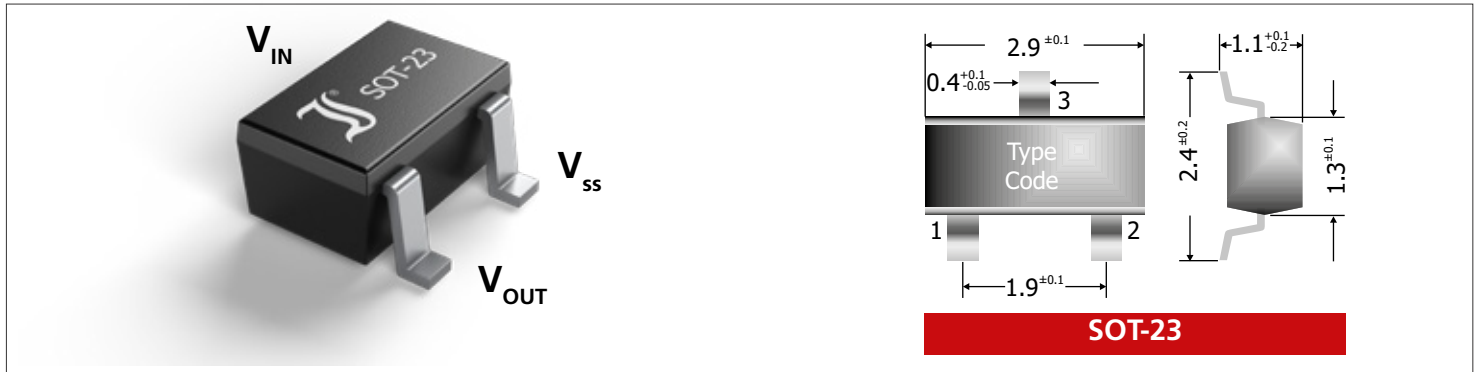
- › Battery powered electronic devices
- › Mobile / Smart Phones
- › Digital Cameras and Camcorders
- › Home Automation Systems
- › Game Console

Ultra Low Power LDO Voltage Regulators Family:

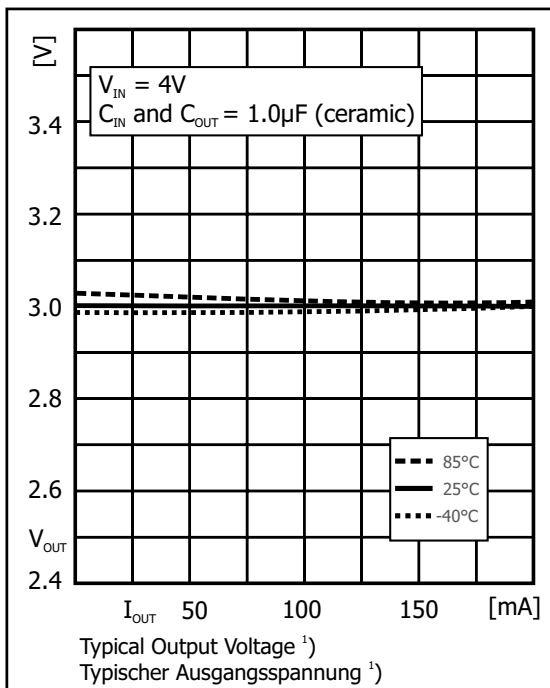
Partnumber	Tolerance	Input Voltage	Output Current	Output Voltage	Quiescent Current	Dropout Voltage	Package
DI62061.5Sx	1%, 2%	7.0 V	60 mA	1.5 V	8.0 μ A	580 mV	SOT-23
DI62061.8Sx	1%, 2%	7.0 V	80 mA	1.8 V	8.0 μ A	350 mV	SOT-23
DI62062.5Sx	1%, 2%	7.0 V	150 mA	2.5 V	8.0 μ A	350 mV	SOT-23
DI62062.8Sx	1%, 2%	7.0 V	150 mA	2.8 V	8.0 μ A	350 mV	SOT-23
DI62063.0Sx	1%, 2%	7.0 V	200 mA	3.0 V	8.0 μ A	250 mV	SOT-23
DI62063.3Sx	1%, 2%	7.0 V	200 mA	3.3 V	8.0 μ A	250 mV	SOT-23
DI62063.6Sx	1%, 2%	7.0 V	200 mA	3.6 V	8.0 μ A	250 mV	SOT-23

Note: x = 1 is 1% tolerance type, x = 2 is 2% tolerance type.

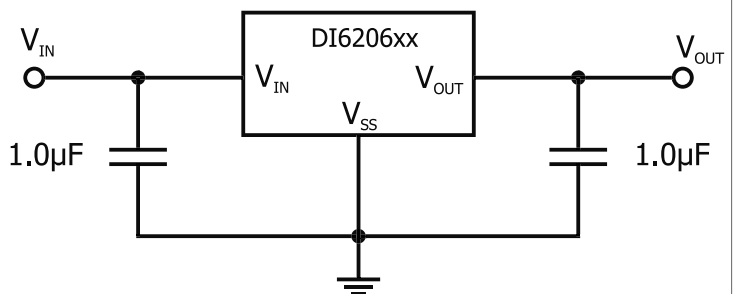
Package Information:



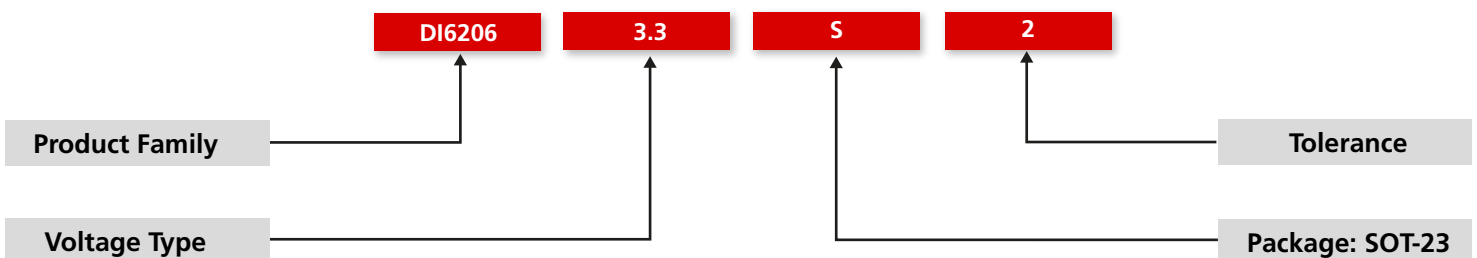
Typical V_{OUT} Characteristics
(DI62063.0S2)



Typical Application Circuit



Nomenclature:



Version 01/2020